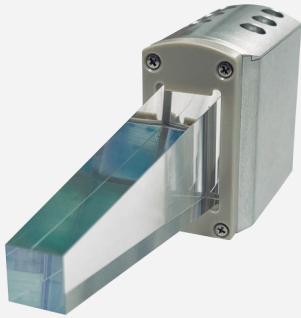


# Conduction Cooled Vertical Stack Diode Laser

## Vsilk 2-1200plus



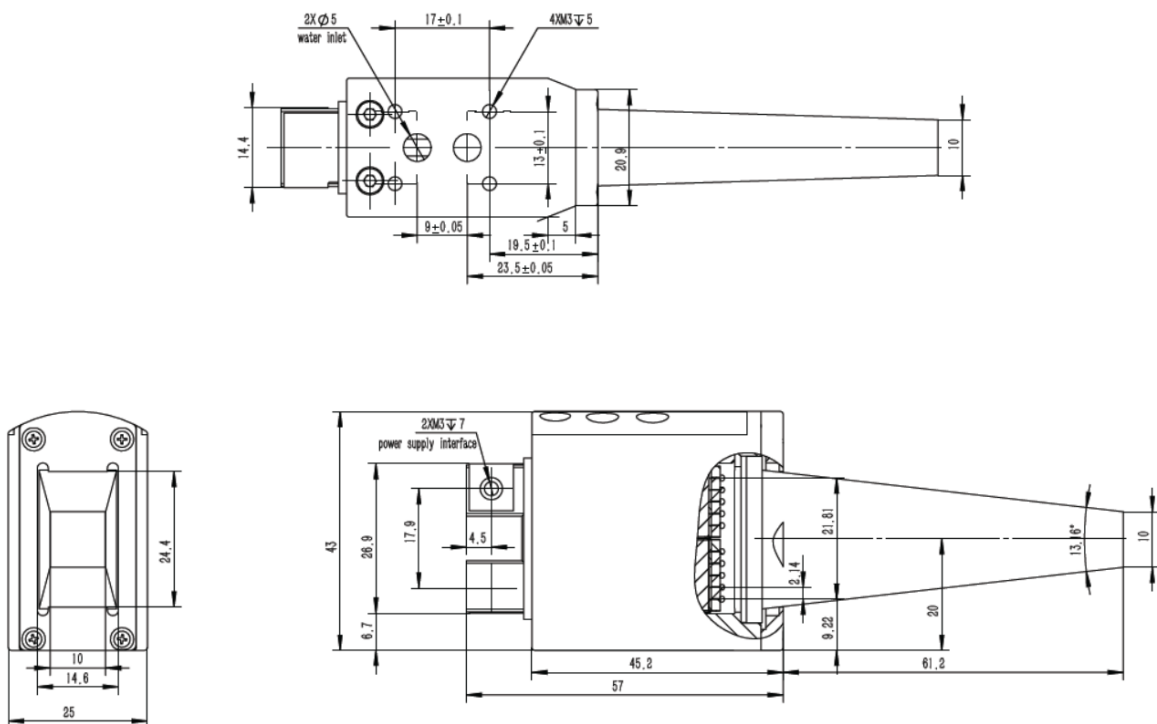
### Features

- High effective energy
- High beam quality
- High reliability
- Small size
- Light weight

### Applications

- Hair removal

### Product Dimensions (mm)



**Remark:** The structure drawing is for reference only. Please feel free to contact us for any special requirements.

## Product Specifications

### Product Code

Part No. <sup>1</sup>

FL-Vsilk2-1200-808-P

Optical Data <sup>2</sup>	Unit	Value
Centroid Wavelength	nm	808
Wavelength Tolerance	nm	± 15
Output Power after LD <sup>3</sup>	W	1200
Output Power after waveguide <sup>3</sup>	W	1000
Number of bars	-	10
Spot Size <sup>4</sup>	mm	10 × 10
Wavelength Temp. Coefficient	nm/°C	~ 0.28

Electrical Data <sup>2</sup>		
Operation Current	A	≤ 130
Threshold Current	A	≤ 25
Operating Voltage	V	≤ 20
Slope Efficiency per bar	W/A	≥ 1.0
Power Conversion Efficiency	%	≥ 45
Max. Pulse Width	ms	400
Max. Duty Cycle	%	30

Miscellaneous Data		
Operating Temperature <sup>5</sup>	°C	22 ~ 28
Coolant	-	Distilled water or pure water
Flow Rate	L/min	3 ~ 4

<sup>1</sup> Part No. = Brand Code - Series - Power - Centroid Wavelength .

<sup>2</sup> Data at 25°C unless otherwise stated.

<sup>3</sup> Reduced lifetime if used above nominal operating conditions.

<sup>4</sup> Output from the waveguide.

<sup>5</sup> A non-condensing environment is required for storage and operation below ambient dew level.



**Recommended Operation Condition**

Vsilk 2-1200plus Energy Table														
Energy(J)		Frequency(Hz)										Iop		
		1	2	3	4	5	6	7	8	9	10		~120A	
Pulse Width (ms)	10	10	10	10	10	10	10	10	10	10	10	10		~105A
	20	20	20	20	20	20	20	20	20	20	20	20		~70A
	30	30	30	30	30	30	30	30	30	30	30	30	Water Temperature T=25±3°C  Flow Rate: 3~4L/min	
	40	40	40	40	40	40	40	40						
	50	48	48	48	48	48	48							
	60	50	50	50	50	50								
	70	58	58	58	58									
	80	67	67	67										
	90	75	75											
	100	83												
	200	83												
	300	125												
400	167													