

Conduction Cooled Vertical Stack Diode Laser

Vsilk 2-1200



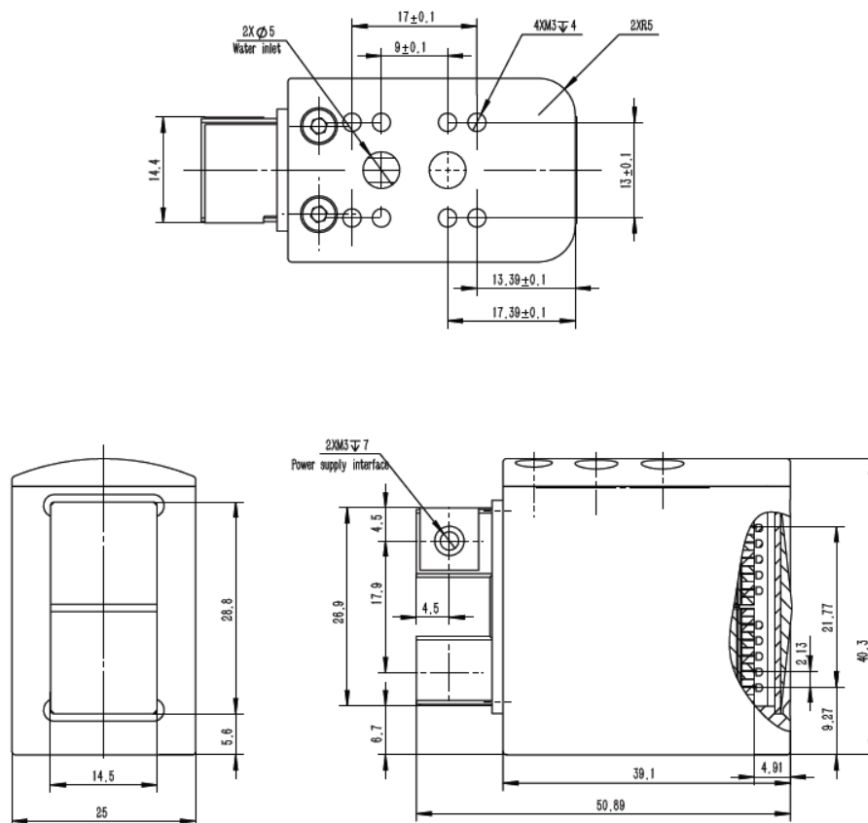
Features

- High effective energy
- High beam quality
- High reliability
- Small size
- Light weight

Applications

- Hair removal

Product Dimensions (mm)



Remark: The structure drawing is for reference only. Please feel free to contact us for any special requirements.

Product Specifications

Product Code

Part No. ¹

FL-Vsilk2-1200-808

Optical Data ²	Unit	Value
Centroid Wavelength	nm	808
Wavelength Tolerance	nm	± 15
Output Power ³	W	1200
Number of bars	-	10
Bar to Bar Pitch	mm	2.1
Fast Axis Divergence 95%	°	5 ~ 7
Slow Axis Divergence 95%	°	12 ~ 14
Spot Size ⁴	mm	12 × 24
Wavelength Temp. Coefficient	nm/°C	~ 0.28

Electrical Data ²

Operation Current	A	≤ 130
Threshold Current	A	≤ 25
Operating Voltage	V	≤ 20
Slope Efficiency per bar	W/A	≥ 1.1
Power Conversion Efficiency	%	≥ 48
Max. Pulse Width	ms	400
Max. Duty Cycle	%	30

Miscellaneous Data

Operating Temperature ⁵	°C	22 ~ 28
Coolant	-	Distilled water or pure water
Flow Rate	L/min	3 ~ 4

¹ Part No. = Brand Code - Series - Power - Centroid Wavelength.

² Data at 25°C unless otherwise stated.

³ Reduced lifetime if used above nominal operating conditions.

⁴ At the distance of 32mm from light emitting surface.

⁵ A non-condensing environment is required for storage and operation below ambient dew level.



Recommended Operation Condition

Vsilk 2-1200 Energy Table													
Energy(J)		Frequency(Hz)										Iop	
		1	2	3	4	5	6	7	8	9	10		~120A
Pulse Width (ms)	10	12	12	12	12	12	12	12	12	12	12		~105A
	20	24	24	24	24	24	24	24	24	24	24		~70A
	30	36	36	36	36	36	36	36	36	36	36		Water Temperature T=25±3°C Flow Rate: 3~4L/min
	40	48	48	48	48	48	48	48					
	50	58	58	58	58	58	58						
	60	60	60	60	60	60							
	70	70	70	70	70								
	80	80	80	80									
	90	90	90										
	100	100											
	200	100											
	300	150											
400	200												