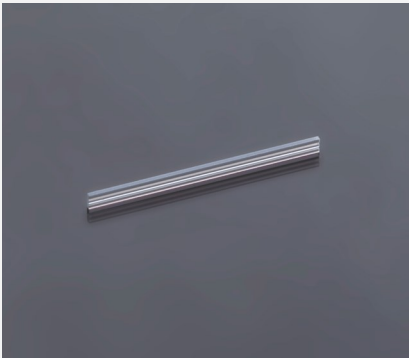


Fast Axis Collimator

FAC160



Features and Advantages

Acylindrical lens for the collimation of the fast axis of diode lasers.

Product Specifications

Specification Data	Unit	Value
Material		High-Index IR (Ohara)
Width (W)	mm	0.8 ± 0.05
Thickness (T)	mm	0.25 ± 0.01
Clear aperture	mm ²	(L-0.5) × 0.25
Refractive index n @ 980 nm		> 1.9
Effective focal length (EFL) @ 980 nm	mm	0.160
Back focal length (BFL) @ 980 nm	mm	0.034
Numerical aperture (NA)		0.8
Transmission	%	> 99
Power within an angle of ± 3.6 mrad ⁽¹⁾	%	> 85

Product Code	ZLE001942 ⁽²⁾	ZLE001939 ⁽²⁾	ZLE002012 ⁽²⁾
Specification Data	Unit	Value	Value
Length (L)	mm	12.0 ± 0.05	12.0 ± 0.05
AR-Coating	nm	790 - 990	600 - 700
Surface imperfections (DIN ISO 10110-7)		5/7x0.025; C4x0.1; L6x0.025; E0.2	5/7x0.025; C4x0.1; L6x0.025; E0.2

⁽¹⁾ Valid for an emitter-height of 1µm and no smile of the laser diode.

⁽²⁾ Example for customization – design, dimensions & coatings on request.

Product Drawing (mm)

