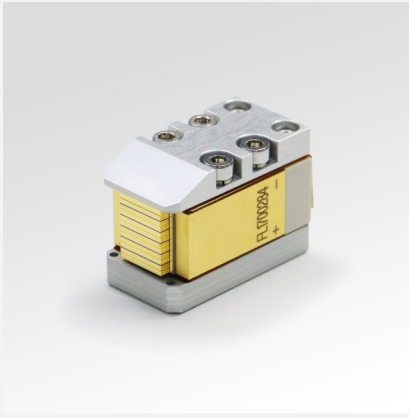


Conduction Cooled QCW Vertical Stack Diode Laser

GS20 Series



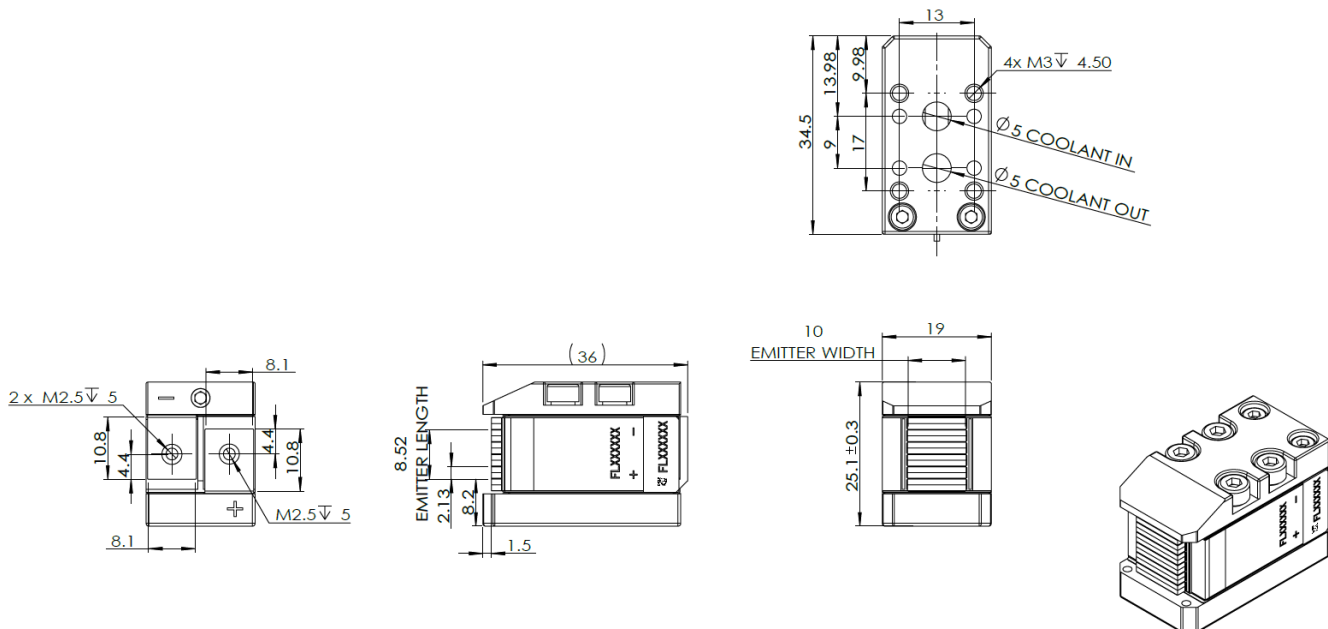
Features

- AuSn Bonding
- High reliability
- Narrow spectrum
- High peak power
- Compact Size

Applications

- Pumping
- Illumination
- Industry
- Research

Product Dimensions (mm)



Remark: The structure drawing is for reference only (5bar module). Please feel free to contact us for any special requirements.

Product Specifications

Product Code

Part No. ¹	FL-GS20-5X1- 2000-808(Q)	FL-GS20-10X1- 4000-808(Q)	FL-GS20-15X1- 6000-808(Q)
-----------------------	-----------------------------	------------------------------	------------------------------

General Data	Unit	Value	Value	Value
Operation Mode	-	QCW	QCW	QCW
Pulse Width	μs	400	400	400
Duty Cycle	%	8	8	8
Bar Pitch	mm	2.13	2.13	2.13

Optical Data³

Centroid Wavelength	nm	808	808	808
Wavelength Tolerance	nm	± 2	± 2	± 2
Output Power per Bar	W	400	400	400
Number of Bars	-	5	10	15
Spectral Width FWHM	nm	≤ 4	≤ 4	≤ 4
Spectral Width 90% Energy	nm	/	/	/
Fast Axis Divergence (FWHM)	°	35 (typical)	35 (typical)	35 (typical)
Fast Axis Divergence with FAC	°	≤ 0.5°	≤ 0.5°	≤ 0.5°
Slow Axis Divergence (FWHM)	°	8 (typical)	8 (typical)	8 (typical)
Polarization Mode	-	TE	TE	TE
Wavelength Temp. Coefficient	nm / °C	~ 0.28	~ 0.28	~ 0.28

Electrical Data³

Operation Current	A	≤ 400	≤ 400	≤ 400
Threshold Current	A	≤ 40	≤ 40	≤ 40
Operating Voltage per Bar	V	≤ 2	≤ 2	≤ 2
Slope Efficiency per Bar	W / A	≥ 1	≥ 1	≥ 1
Power Conversion Efficiency	%	≥ 50	≥ 50	≥ 50

Thermal Data

Operating Environment Temperature	°C	20 ~ 30	20 ~ 30	20 ~ 30
Storage Temperature ⁴	°C	-55 ~ 85	-55 ~ 85	-55 ~ 85
Coolant	-	Distilled water	Distilled water	Distilled water
Flow Rate	L/min	2.5	2.5	2.5

¹ Part No. = Brand Code - Series - Power - Centroid Wavelength - Variant Code.

² Reduced lifetime if used above nominal operating conditions.

³ Data at 25°C unless otherwise stated.

⁴ A non-condensing environment is required for storage and operation below ambient dew level.

