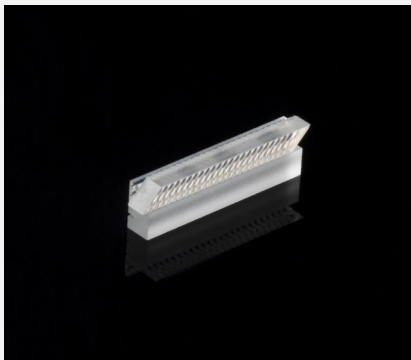


Beam Transformation System

BTS(FAC365)-P0.4



Features and Advantages

Beam Transformation System (BTS) for diode laser bars with up to 25 emitters: emitter size up to 200 μm , emitter pitch 400 μm . The BTS is used to make the beam parameter product of diode laser bars symmetrical for free beam lasers or fiber coupling.

The BTS consists of a FAC365 fast axis collimation lens, a lens array for 90° rotation of the emitters and a bottom tab.

Product Specifications

| Specification Data | Unit | Value |
|---|-----------------|------------------|
| Material | | S-TIH53 (Ohara) |
| Length (L) | mm | 12.0 \pm 0.1 |
| Width (W) | mm | 1.5 \pm 0.1 |
| Thickness (T) | mm | 2.05 \pm 0.1 |
| Clear aperture | mm ² | 10.5 x 0.55 |
| Back focal length BFL @ 808 nm | mm | 0.09 |
| Pitch | mm | 0.4 |
| Gap | mm | 0.05 \pm 0.01 |
| Numerical aperture (NA) | | FA: 0.5 SA: 0.06 |
| Transmission | % | > 98 |
| Remaining divergence (FW1/e ²) for fast axis ⁽¹⁾ | mrad | < 6 |

| Product Code | MOD000687 ⁽²⁾ | MOD000672 ⁽²⁾ |
|-------------------------|--------------------------|--------------------------|
| Specification Data | Unit | Value |
| AR-coating | nm | 790-990 |
| Divergence optimized at | nm | 808 |

⁽¹⁾ Depending on laser parameters / specification is valid for an emitter-height of 1 μm and no smile of the laser diode.

⁽²⁾ Example for customization – customized coatings on request.

Product Dimensions (mm)

